

**DOBAMA  
THEATRE**



# MAKE BELIEVE

**OCTOBER 6—29, 2023**

**WRITTEN BY:**  
Bess Wohl

**DIRECTED BY:**  
Nathan Motta

WITH GENEROUS SUPPORT FROM

THE GEORGE GUND  
FOUNDATION

DANIEL MALTZ

PAUL M. ANGELL  
FAMILY FOUNDATION

AGNES  
STUDIO

CLEVELAND  
FOUNDATION

Ohio Arts  
COUNCIL

OHIOHOPE  
arts & culture  
energizing community

THE SHUBERT  
FOUNDATION, INC.



## LAND ACKNOWLEDGEMENT

In recognizing the land upon which we reside, we express our gratitude and appreciation to those who lived and worked here before us; those whose stewardship and resilient spirit makes our residence possible on this traditional homeland of the Lenape (Delaware), Shawnee, Wyandot Miami, Ottawa, Potawatomi, and other Great Lakes tribes (Chippewa, Kickapoo, Wea, Pinakshaw, and Kaskaskia). We also acknowledge the thousands of Native Americans who now call Northeast Ohio home. Dobama Theatre and the greater Cleveland area occupy land officially ceded by 1100 chiefs and warriors signing the Treaty of Greenville in 1795.

## SOLIDARITY STATEMENT

Dobama Theatre is committed to anti-racism action and a culture of authentic inclusivity. This effort is ongoing and will not end anytime soon. Our work is divided into three parts: The People, The Work, and The Process. The People come first, as they also do in our core values. We care for the whole person and create a larger, more equitable table for all to pursue our mission together. The Work are actions being taken to root out white supremacist, misogynistic, homophobic, transphobic, ableist, and other oppressive structures so that we might replace them with organizational tools built on consensus, transparency, and trust. The Process is how we will move forward in equitably representing and investing in the community we serve, and how we will continue to assess our progress, remain accountable, and determine further action in years to come.

For more information on these and other efforts, visit [dobama.org/antiracism](https://dobama.org/antiracism)

## FROM THE ARTISTIC DIRECTOR



*Make Believe* is one of the best scripts I've read in my ten years at Dobama Theatre.

I had heard good things about the play while it was still in development, and I'd been a fan of playwright

Bess Wohl's previous work for years, having seen her fantastic play *Small Mouth Sounds* years earlier when it premiered in New York and admired other notable scripts of hers like *American Hero* and Tony nominated *Grand Horizons*. So, I was eager to read *Make Believe* when I got my hands on it soon after its world premiere.

When I finished reading the script, I immediately pulled out my laptop and emailed Ms. Wohl to express how well-crafted and meaningful I found the play and to share my hope that we'd be able to produce it at Dobama once it became available to regional theatres. In my time as Artistic Director I've ready many, many scripts, and that was the first time I'd done anything like that in my career.

Ms. Wohl's play feels both familiar and totally unique. It's a script that's expertly crafted, layering nuance and meaning while drawing connections across its two halves

in extraordinary ways. *Make Believe* is a play written for adults, performed in large part by a cast of four extraordinary young actors - all under the age of twelve. Their work is something to behold. Yet the play has an extraordinary transformation half way through when the time shifts to 30 years later, reflecting insightful truths about the gifts and the curses of childhood that we carry with us as adults.

*Make Believe* touches everyone that experiences it with a deep intimacy, vulnerability, and humanity that feels more profound than what we typically see onstage. Its storytelling is deeply personal. Beyond its suspense and darker themes lies universal themes about the innocence of childhood, the bonds of family, and a love that drives out our darkest demons.

This is the first production of an extraordinary season that you can read all about here. I hope you'll join us for this season-opener, then make plans to come back and be part of the extraordinary theatre we're making at Dobama this year. We have big plans for the future and you will make it all possible. Thank you for your ongoing support of Dobama and of live, professional theatre.

With Love and Respect,

Nathan Motta



Serving Lunch &  
Dinner Daily  
KITCHEN:  
Mon.-Sat. 11am-11pm  
Sun. 12:30-10pm  
BAR:  
Mon.-Sat. open until 2am  
Sun. open until Midnight

2206 Lee Road • Cleveland Hts.  
(216) 371-3138  
www.NewHeightsGrill.com  
NewHeightsGrill@facebook.com

## ABOUT THE DIRECTOR



**NATHAN MOTTA** is the 5th Artistic Director at Dobama Theatre where he spurred Dobama's move to become an Equity Theatre. Select directing credits at Dobama include: *An Octoroon* (Best Director- Cleveland Critics Circle 2016), *The Flick* (Best Director- Cleveland Critics Circle 2017), *Stupid F\*\*king Bird* (Best Director- Cleveland Critics Circle 2019), *Appropriate*, *Peter and the Starcatcher*, *Superior Donuts*, *A Bright New Boise*, *The Aliens*, *A Civil War Christmas*, *Marie Antoinette*, *John*, and the World Premieres of *How to Be A Respectable Junkie* and *The Land of Oz*. A professional director, conductor, and composer/lyricist, he has worked with Cleveland Play House, Great Lakes Theater, Idaho Shakespeare Festival, Baldwin Wallace University, Oberlin College, Cleveland State University, John Carroll University, Cleveland Orchestra, Pittsburgh Symphony Orchestra, Opera Cleveland, Ohio Light Opera, Cain Park, Mercury Opera Rochester, and Civic Light Opera (Pittsburgh). Original musicals include *The Land of Oz* (composer; book and lyrics by George Brant), *Midsummer*, and *Little White Gloves*. Motta is a leader in equity, diversity, and inclusion work and a fierce advocate for safety and wellness practices for the theatre. He holds a B.F.A. from Carnegie Mellon University and an M.M. from the Eastman School of Music. Member Stage Directors and Choreographers Society (SDC), the national theatrical union that unites, empowers and protects professional stage Directors and Choreographers throughout the United States.

Ohio Arts  
COUNCIL



The arts create jobs,  
strengthen education,  
and connect communities.

30 E. BROAD ST. 33RD FLOOR, COLUMBUS, OHIO 43215-3414 | 614-466-2613

OAC.OHIO.GOV | @OHIOARTSCOUNCIL | #ARTSOHIO

**ABOUT THE PLAYWRIGHT**



**BESS WOHL** is a playwright and filmmaker. Her plays have been produced on and off Broadway, regionally, and internationally. Her plays include *Grand Horizons* (Tony Nomination for Best Play, Outer Critics Circle Honor, Drama League Award nom); *Make Believe* (NY Times Critic Pick, Best of 2019, Outer Critics Circle Honor); *Continuity*; *Small Mouth Sounds* (John Gassner Outer Critics Circle Award, top ten lists in *The New York Times*, *The New York Post*, *The Guardian*); *American Hero*; *Barcelona*; *Touched*; *In*; *Cats Talk Back* and the musical *Pretty Filthy* with composer/lyricist Michael Friedman and *The Civilians* (Lucille Lortel and Drama Desk nominations for Outstanding Musical). Wohl’s plays have been produced or developed at Second Stage, Manhattan Theater Club, Ars Nova, The Williamstown Theatre Festival, Goodman Theater, The Geffen Playhouse, People’s Light and Theatre Company, The Contemporary American Theater Festival, Vineyard Arts Project, The Pittsburgh Public Theater, Northlight Theater, Ojai Playwright’s Conference, the Cape Cod Theatre Project and PlayPenn. Awards and honors include the Sam Norkin special Drama Desk Award for “establishing herself as an important voice in New York theater,” the Georgia Engell Comedy Playwriting Award from the Dramatists Guild, the Athena Award for her screenplay *Virginia*, MacDowell Fellowships and inclusion on Hollywood’s Black List of Best Screenplays. Wohl is an associate artist with *The Civilians*, an alumna of Ars Nova’s Play Group, and the recipient of new play commissions from Manhattan Theatre Club, Lincoln Center and Williamstown Theatre Festival. She is a graduate of Harvard and the Yale School of Drama.



Thank you for pushing artistic boundaries. You inspire us.

XO,  
**AGNES STUDIO**  
 SEASON SPONSOR

**ART DIRECTION + DESIGN**  
 helloagnes.com

*Support the Arts!*

Opportunities for lifelong learning, arts and entertainment, quiet reflection and more are supported at Kendal.

To learn more, visit us online or call for an in-person or virtual tour.

[kao.kendal.org](http://kao.kendal.org) • 1.800.548.9469

**KENDAL®**  
*at Oberlin*

Office of the President  
 carm

Equal Housing Opportunity



CLEVELAND·ISRAEL  
**ARTS CONNECTION**

a program of the Jewish Federation of Cleveland



Roe Green, Honorary Producer

VISUAL ARTS



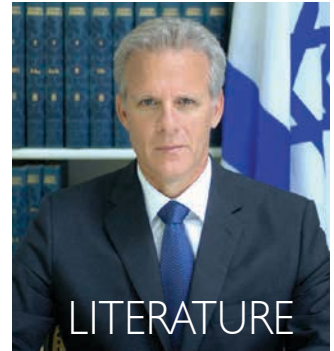
DANCE



MUSIC



FILM



LITERATURE

For updates join the Cleveland Israel Arts Connection Facebook group  
or visit [jewishcleveland.org/israelarts](http://jewishcleveland.org/israelarts)

DOBAMA THEATRE PROUDLY PRESENTS  
the Regional Premiere of

# MAKE BELIEVE

## BY BESS WOHL

### DIRECTED BY NATHAN MOTTA

OCTOBER 6 – 29, 2023

---

#### THE CAST

---

<b>COURTNEY BROWN*</b>	ADULT KATE	<b>ANJANETTE HALL*</b>	ADULT ADDIE
<b>PAUL HURLEY*</b>	ADULT CARL	<b>ANDREW POPE</b>	ADULT CHRIS
<b>ARTHUR ATWELL</b>	CHRIS	<b>KAITLYN BARTHOLOMEW</b>	KATE
<b>JONAH MCMURDY</b>	CARL	<b>CLAIRE ZALEVSKY</b>	ADDIE

SWINGS:

**CHRISTIAN ACHKAR, KATHERINE NASH** (Adults)  
**MILO DOMINIC, JULIANA SHUMAKER, CHARLOTTE SLUZEWSKI** (Children)

\*Member of Actors' Equity Association, the Union of Professional Actors and Stage Managers in the United States.  
† Equity Membership Candidate



Actors' Equity Association (AEA), founded in 1913, represents more than 49,000 actors and stage managers in the United States. Equity seeks to advance, promote and foster the art of live theatre as an essential component of our society. Equity negotiates wages and working conditions, providing a wide range of benefits, including health and pension plans. AEA is a member of the AFL-CIO, and is affiliated with FIA, an international organization of performing arts unions. The Equity emblem is our mark of excellence. [actorsequity.org](http://actorsequity.org)

---

THIS PLAY WILL BE PERFORMED WITH NO INTERMISSION

Patrons who exit the theatre will only be allowed re-entry at the discretion of the Stage Manager.

**MAKE BELIEVE** was originally commissioned by Hartford Stage  
(Darko Tresnjak, Artistic Director; Michael Stotts, Managing Director)

World premiere production presented by Hartford Stage September 14, 2018  
(Darko Tresnjak, Artistic Director; Michael Stotts, Managing Director)

New York premiere produced by Second Stage Theater, New York, 2018  
(Carole Rothman, President and Artistic Director; Casey Reitz, Executive Director)

**MAKE BELIEVE** is presented by special arrangement with Dramatists Play Service, Inc., New York.

The videotaping or making of electronic or other audio and/or visual recordings of this production or distributing recordings on any medium, including the internet, is strictly prohibited, a violation of the author's rights and actionable under united states copyright law.

For more information, please visit: <https://shop.samuelefrench.com/content/files/pdf/piracy-whitepaper.pdf>

---

Dobama Theatre is a proud member of Theatre Communications Group  
(TCG), the national organization for the American theatre.



## PRODUCTION STAFF

### DIRECTOR

Nathan Motta

### SCENIC DESIGNER

Laura Carlson Tarantowski

### LIGHTING DESIGNER

Marcus Dana

### SOUND DESIGNER

Richard Ingraham

### COSTUME DESIGNER

Lady Jen Ryan

### PROPS DESIGNER

Vanessa Cook

### YOUNG ACTOR

### COORDINATOR

Lorna Patterson

### TECHNICAL DIRECTOR

Connor Stout

### STAGE MANAGER

Joel Rathbone\*

### PRODUCTION MANAGER

Colin Anderson

### ASSISTANT DIRECTOR

Erin E. Dolan

### ASSISTANT STAGE MANAGERS

Kenedy Brooks, Kelsey Malone

### ASST. SOUND DESIGNER (FOCUS)

E.J. Buckner

### SCENIC PAINTER

Justine Schneider

### WARDROBE

Lainey Bodenburg

## DOBAMA STAFF

### ARTISTIC DIRECTOR

Nathan Motta

### DIRECTOR OF PRODUCTION

Colin Anderson

### DIRECTOR OF ENGAGEMENT

Mariah Burks

### DIRECTOR OF PROGRAMS

Erin Dolan

### CONNECTIVITY DIRECTOR

Elise Kuklinca

### BUSINESS DIRECTOR

Amy Lin Weaver

### EDUCATION DIRECTOR

Carrie Williams

### RESIDENT LIGHTING DESIGNER

Marcus Dana

### RESIDENT SOUND DESIGNER

Angie Hayes

### RESIDENT COSTUME DESIGNER

Tesia Dugan Benson

### RESIDENT PROPS DESIGNER

Vanessa Cook

### RESIDENT SCENIC ARTIST

Justine Schneider

### RESIDENT STAGE MANAGER

Joel Rathbone\*

### BOX OFFICE STAFF

DeLee Cooper, Sarah  
Demetruk, Stuart Hoffman

### DOBAMA FOCUS APPRENTICES

E.J. Buckner (Sound); Jasmine  
A. Golphin (Projections);  
Cam Henderson (Stage  
Management)

### RADs (Resident Associates)

Lizzi Lucarell (Technical);  
Emily Polcyn (Administration);  
Maddie Schwartz  
(Administration)

## DOBAMA THEATRE BOARD OF DIRECTORS

Marian Fairman

*President*

Rachel Zake

*Vice President*

Matt Eiben

*Treasurer*

Killeen Vogel

*Secretary*

Donna Korn

*Member At-Large*

Tameka Bradley

Christal Contini

Hedy Milgrom

Marissa Glynias Moore

Daisha Olmeda

Debra Rosenthal

Caroline Jackson Smith

Trinidad Snider

Kate Vlasek

Brittany Watkins

Thomas Zipp

Chennelle Bryant-Harris

*Rotating Artist Chair*

Greg Vovos

*Rotating Playwright  
Chair*

### EMERITUS DIRECTORS

Spencer Caress

Joyce Casey

*Artistic Director*

*Emerita*

Joel Hammer

*Artistic Director*

*Emeritus*

Maurice Heller

Barbara Hill-Newby

Bill Newby

Jennifer Stapleton



**CAST**

**COURTNEY ELIZABETH BROWN\*** (ADULT KATE) is thrilled to be a part of this production. Most recently, she appeared in the workshop and reading of *Louder* at the Cleveland Play House. Favorite roles include

the recent world premiere of a new adaptation of *An Enemy of the People* at Rubber City Theatre; 9 to 5 at Porthouse Theatre; *Romeo and Juliet* at Oberlin Summer Theatre; *Top Girls* at Mamai Theatre; *Angels in America* (both parts), *Eurydice*, *Militant Language*, *I Love you Because*, *Reefer Madness* at Know Theatre of Cincinnati; and *Burn This*, *Spain* at Actor's Express in Atlanta, GA. Courtney holds an M.F.A. in Acting from USM and is an Associate Professor of Voice and Acting at Kent State University, a member of Actors Equity Association, and a Lessac Certified Body Voice Trainer.



**ANJANETTE HALL\*** (ADULT ADDIE) is so excited to be back home at Dobama. Her Dobama credits include *Sylvia in The Thin Place*, *The Pilot* in *GROUNDED*, *Dora* in *An Octoroon*, *Aimee* in *The Night Alive*, *Becky* in *Becky Shaw*, and *Lisa*

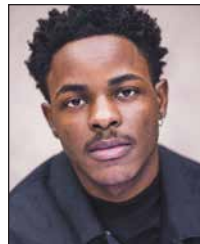
in *The Lyons*. Other Northeast Ohio Credits include *Nora* in *A Doll's House* (Mamai), *Mother* in *A Christmas Story* (CPH), *Ruth* in *Blithe Spirit* (Coach House), *Ellie Dunn* in *Heartbreak House* (Special Equity Agreement), and *Masha* in *Three Sisters* (Mamai). Anjanette holds an MFA in Acting from Rutgers University. She is an Assistant Professor of Theatre at Oberlin

College, and before that she was an Assistant Professor of Theatre at Baldwin Wallace University. Her favorite roles to date are *Wife* to *Krys*, and *Mom* to *Jack*, *Sebastian*, and *Vivianne*.



**PAUL HURLEY\*** (ADULT CARL) is thrilled to be performing with Dobama Theatre for the first time. Regional credits include work with Chicago Shakespeare Theater, New York Classical Theatre, Utah Shakespeare Festival,

Great Lakes Theater, Idaho Shakespeare Festival, Milwaukee Repertory Theatre, Shakespeare Festival St. Louis, Delaware Theatre Company, Madison Repertory Theatre, Remy Bumpo Theatre Company, Resident Ensemble Players, Notre Dame Shakespeare Festival, Renaissance Theaterworks, Ohio Shakespeare Festival, and seven seasons with the American Players Theatre. Paul earned his MFA from the University of Delaware's Professional Theatre Training Program. He is an Associate Professor of Theatre at Kent State University and has been a member of Actors' Equity Association for the past 15 years. Much love to Jamie and Brea for making this possible!



**ANDREW POPE** (ADULT CHRIS) is thrilled and overjoyed to perform at Dobama Theatre. He is a graduate from the B.F.A. Acting and Directing program from Baldwin Wallace University. He has toured with Great Lakes Theater

**DOBAMA MISSION**

Dobama Theatre is dedicated to premiering important new plays by established and emerging playwrights in professional productions of the highest quality. Through theatrical production, community engagement, and education programming, Dobama nurtures the development of theatre artists and builds new audiences for the arts while provoking an examination of our contemporary world.

for *Macbeth* and he has also portrayed Tom Robinson in *TKAM*, Claudio in *Much Ado About Nothing* (Ensemble Theatre), P-Sam in *Paradise Blue*, various main characters in *Red Summer*, and Jimmy in *Greenwood*, *An American Dream Destroyed* (all three at Karamu House). Also, he has portrayed Sebastian in *Twelfth Night*, Bill Wynnfield in *Enemy of the People*, Dominick in *Teena with 2 E's* at Ensemble Theatre. He can't wait to help tell this story, and he is thankful for his close family, friends, and God up above. Please, enjoy the show.



**ARTHUR ATWELL** (CHRIS) is a 7th grade student at University School and he lives in Cleveland Heights. This is his fourth production. Others include: *The Witches* (The Boy) and *Oliver! Jr.* (The Captain) at University School,

and *Bye Bye Birdie* (Hugo) with Heights Youth Theatre. He enjoys drawing, playing tennis, and playing baseball with his friends. Arthur wants to thank Dobama for this opportunity and his family for their kindness and support.



**KAITLYN BARTHOLOMEW** (KATE) has performed in over twenty productions with several area theaters, most recently playing Lavender in *Matilda*. She is a member of Olde Towne Hall Theatre's Junior Theater

Festival team. Kaitlyn made her professional debut playing Sophie in *School of Rock* at Cain Park. Other favorite past roles include Young Anna in *Frozen*, Tootie in *Meet Me in St Louis*, Rumpleteazer in *CATS*, Mad Hatter in *Alice in Wonderland*, and Piglet in *Winnie the Pooh*.



**JONAH MCMURDY** (CARL) is 11 years old, and attends Woodbury Elementary School in Shaker Heights. He has been seen locally at Heights Youth Theater. There, he's been in five shows, with his favorite roles including Tommy

in *Matilda*, and Blue in *Winnie the Pooh*. He's so thankful for the opportunity to do his first play, especially alongside his good friend Claire Zalevsky. Thanks to my mom, dad, little brother Daniel, and Dewey, my golden doodle, for all of their support.



**CLAIRE ZALEVSKY** (ADDIE) is a 5th Grader at Laurel School. She has performed at Heights Youth Theatre in *Bye Bye Birdie* (Teen Trio), *Matilda* (Erika), *Winnie the Pooh* (Roo), *Once on This Island* (ensemble), *Mary Poppins* (Chimney

Sweep) and as the youngest chorus child in *The Music Man* when she was 3 years old. Claire can be seen in current ads for Urban Air Trampoline and Adventure Park. Claire has been playing drums for several years and loves jamming around town in bands with her brother, Liam. She enjoys riding horses, singing, sketching and dare devil activities. Claire is grateful to her mom, dad, and dog Hank for walking her down the street to her *Make Believe* rehearsals. She would like to thank Nathan and all of Dobama for giving her this incredible experience. Added bonus: she gets to perform with so many great friends - especially Jonah, who she has known since she was a baby!

**GRAPHIC DESIGN** Anne Pillot Creative, LLC • [www.apillotcreative.com](http://www.apillotcreative.com)

**PRINTING** Premier Printing Corporation • 216.831.8785 • [premierprintingcorp.com](http://premierprintingcorp.com)

# Have you Heard?

The Maltz Center has performances unlike anything else. Spread the word.



World Music, classical favorites, literary icons, and more. The best Cleveland has to offer is just down the street.



MILTON AND TAMAR MALTZ  
Performing Arts Center at  
The Temple-Tifereth Israel  
CASE WESTERN RESERVE UNIVERSITY



[case.edu/maltzcenter](http://case.edu/maltzcenter)



**CHRISTIAN ACHKAR**  
(ADULT SWING (MASC)) is thrilled to be working with Dobama Theatre for the first time. He attended Bowling Green State University on the Eva Marie Saint Scholarship for “Exceptional Talent in Acting” and graduated

with a B.A. in Film. He has worked behind the camera with Fox Sports Ohio as a Production Assistant and Associate Producer. On camera, he has been cast as a principal role for various commercials including Ohio Tourism, Viega, and UPMC. He was most recently seen on stage as Jim/Tom in *Clybourne Park* (Ensemble Theater), Jonathan in *The Play that Goes Wrong* (Weathervane Playhouse), and Ray in Rubber City’s World Premiere of *Love in Reserve*.



**KATHERINE NASH**  
(ADULT SWING (FEMME)) is excited to be working at Dobama Theatre! She is a performer and artist based in Cleveland, Ohio. A graduate of Indiana University, she holds a BA in Theatre and Drama with a focus in acting. Recent

acting credits include: 2022 & 2023 Marilyn Bianchi Kid’s Playwriting Festivals (Dobama Theatre), *After The Blast* (Convergence-Continuum), the various iterations of *Bedroom Culture*, and *ENDependence* (Cleveland Public Theatre). Thank you for everything Mom, Dad, & Eric!



**MILO DOMINIC**  
(CHILD SWING (CHRIS/ CARL)) is a fifth grader at Canterbury Elementary School in Cleveland Heights. He is especially excited for the opportunity to take the stage at Dobama Theatre following its recent production

of his play, *Moments of Magic*, as part of the 45th Annual Marilyn Bianchi Kids’s Playwriting Festival. Past performances include Heights Youth Theatre productions of *Bye Bye Birdie* (Ensemble), *Matilda* (Nigel), *Mary Poppins* (Chimney Sweep), and with JCC Playmakers in *Seussical* (Mr. Mayor). Milo enjoys writing, drawing, singing, playing chess with his mom, and cooking with his dad (including, at age 4, a cooking segment on TV Channel 8). His passion for direction and choreography are realized with his mostly willing younger brother. Milo hopes to dream, make, and believe throughout childhood and beyond.



**JULIANA SHUMAKER**  
(UNDERSTUDY (KATE)) is thrilled to be debuting on stage at Dobama! Juliana is a 7th grader at Kenston Middle School. This summer she was seen on stage in Cain Park’s production of *Fun Home* as Small Alison. She

also played Matilda in Heights Youth Theater’s production of *Matilda*. Other past productions include Chagrin Valley Little Theater’s holiday

# THE STONE OVEN

BAKERY ● CAFE

2267 Lee Road (between Silsby & Meadowbrook)

Open 7 days

Piano Cleveland presents

DEMYSTIFYING  
CLASSICAL  
MUSIC

# dynamic duos

◀ The 2023 Listening Series ▶



**Yaron  
Kohlberg**

piano



**Christine  
Lamprea**

cello

## IT'S A STRING THING

*the piano as a musical partner*

April 19 | 7:30pm

## IT TAKES A VILLAGE

*the marvels of mentorship*

May 10 | 7:30pm



**Alvin  
Chow**



**Angela  
Cheng**

piano faculty

Oberlin Conservatory of Music



**Olga  
Kern**

piano



**Vladislav  
Kern**

piano

## IT'S ALL RELATIVE

*the joys of music in the family*

May 31 | 7:30pm



Watch in amazement as young prodigies take the stage at the Cleveland International Piano Competition & Institute for Young Artists this July 5 - 16!

More information at [pianocleveland.org](http://pianocleveland.org)

# Our digital collection is here for you, wherever you are, 24/7.

Heights Libraries offers a large collection of digital media, including books, magazines, comics, music, movies, and television shows.

Visit [heightslibraries.org/digital-collection](http://heightslibraries.org/digital-collection) and start exploring!



## PLAYWRIGHTS' GYM

### WHAT IS THE PLAYWRIGHTS' GYM?

The Playwrights' GYM is Dobama Theatre's playwrights' unit. The GYM is a program that provides local playwrights with the opportunity to workshop new work. GYM playwrights are area professionals who are given various resources to help further their work, including rehearsal space, collaboration with a director to assist the playwright, marketing and public events supported by the theatre. The GYM's goal is to nurture new work in a safe environment.

### THE GYM HAS TWO PARTS

**GYMreads:** staged readings of full plays are conducted in the theatre. These are scheduled throughout the season.

**GYMworks:** a "showcase" where scenes from full length plays or shorter theatrical works by GYM playwrights are performed in an annual or bi-annual event.

### THE PLAYWRIGHTS

Christopher Johnston  
Meredith L. King  
Lisa Langford  
Claire Robinson May  
Avery LaMar Pope  
Amy Schwabauer  
Eric Schmiedl  
Logan Cutler Smith  
Greg Vovos  
Dr. Mary E. Weems  
Rachel Zake

For more information, visit [dobama.org](http://dobama.org).

shows *Elf* (Head Elf) and *Miracle on 34th Street* (Dutch girl/Elf) and Stagecrafters' *Shrek the Musical* (Young Fiona/Little Red Riding Hood). Juliana would like to thank all her friends and family for all their love and support and a special thanks to everyone who helped make this show happen.



## **CHARLOTTE SLUZEWSKI**

(UNDERSTUDY (ADDIE)) is thrilled to be on stage with Dobama Theatre! She's a fifth grader at Communion of Saints School. Previous shows with COS include: *Honk*

*Jr.!* (Froglet), *The Little Mermaid Jr.* (Gull), and *Mary Poppins Jr.* (Chimney Sweep). She was cast in *Annie Jr.* (Molly) that was sadly cancelled at the beginning of the pandemic. She has also performed with Heights Youth Theatre: *Winnie the Pooh* (Word Chorus/Bee), *Matilda* (Young Classmate) and *Bye Bye Birdie* (Children's Ensemble). Charlotte is a member of the Cleveland Orchestra Preparatory Chorus and the Seraphim Chorus with Communion of Saints Parish. She also plays the trumpet and acoustic guitar. When not onstage, Charlotte enjoys playing basketball and Scouts BSA. She would like to thank her parents, brothers, and her family and friends near and far in supporting all of her endeavors. As her Uncle Steve once said, "It's all Charlotte's world; we are just fortunate to be part of it."

## **PRODUCTION STAFF**

---

### **DIRECTOR**

**NATHAN MOTTA**  
(see About the Director)

### **SCENIC DESIGNER**

**LAURA CARLSON TARANTOWSKI**  
is happy to be back at Dobama with a wonderful cast and creative team. As the resident set designer and instructor at Oberlin College, recent work includes *The Moors*, *Ophelia*, and *Or*. Favorite recent productions with Dobama include *Stew*, *Kill Move Paradise*, *brownsville song* (*b-side for trey*), and *Stupid Fucking Bird*.

### **LIGHTING DESIGNER**

**MARCUS DANA**  
has worked at Dobama since 2003 as a Technical Director and Lighting Designer. Recent shows include: *Hansel & Gretel* (Technical Director) with Nightingale Opera, Dance Concert: Design Dancing On The Edge, and Cleveland School of Ballet's *The Nutcracker*. Previous lighting includes Tri-C East/Metro from 2000-2016 as Lighting Designer, Laurel School 2009-12, Resident Lighting Designer at Near West Theatre from 2001-06, Guest LD at The Canton Players Guild 2005-11, Verlezza Dance 2004-10, Beck Center 1995-2000, including *The Secret Garden*, where he won the 1995-96 Peggy Ezekiel Award of Outstanding Achievement,

CSU Factory Theatre, Cassidy Theatre, Karamu House, Lake Erie College 1997-06, Willoughby Fine Arts Association, The Bang and The Clatter Theatre, Kalliope Stage, The Denver Center for the Performing Arts, Bonfils Theatre, and The Changing Scene.

### **SOUND DESIGNER**

**RICHARD INGRAHAM**  
first sound designed at Dobama Theatre over 20 years ago with *The Laramie Project*, which opened the week of September 11, 2001. Since then, he has designed a number of Dobama shows, including *The Thin Place*, *The Land of Oz*, *Stupid Fucking Bird*, *Hand to God*, *Civil War Christmas*, *Middletown*, *Caroline or Change*, *Nightbloomers*, *A Number*, *10 Minutes from Cleveland* and *Ears on A Beatle*. Richard has worked at numerous theatres, schools and attractions in the Cleveland area and throughout the US, including Beck Center for the Arts, Baldwin Wallace University, Cain Park, Carnegie-Mellon University, The Cleveland Play House, Cleveland Public Theatre, Cleveland State University, Great Lakes Theater, Idaho Shakespeare Festival, Oberlin College, Playhouse Square Center, and Royal Caribbean Cruise Lines. Richard is the owner of RBI Sound and has worked as a consultant to award-winning software companies that create products for live

event production including Stage Research and Richmond Sound Design.

## **COSTUME DESIGNER**

LADY JEN RYAN

is an artist and an originator. Lady Jen has performed and worked from behind the curtain for over three decades. Lady Jen majored in vocal performance and minored in musical theatre at Bowling Green State University. Lady Jen is an operatically trained vocalist, a fully licensed cosmetologist, an experienced makeup artist, a proficient stylist, a skilled dresser, and a distinguished costume designer. Select design credits include *Addams Family*, *Beauty and the Beast*, *Chess*, *Frankenstein 1930*, *Hair*, *Rocky Horror Show*, the Cleveland Premiere of *The Snow Queen*, *Spring Awakening*, *The Mystery of Edwin Drood*, and *Xanadu*. Select performances include *Applause*, *Cabaret*, *Hunchback of Notre Dame*, *Jesus Christ Superstar*, *Little Shop Of Horrors*, *Nine*, *Rocky Horror Show*, *Scroogel*, *Victor Victoria*, and *You're A Good Man Charlie Brown*. Lady Jen

would like to acknowledge her support system and theatre muses. LG, KJK, RB, RGS – TPOG - Special Thanks to Ms. Walker, My Beast, My Boo, My Jellyfish, My King – only you.

## **PROPS DESIGNER**

VANESSA COOK

is the owner of Cook Theatre Designs, LLC, a freelance design firm that serves Ohio theatre programs. She served as TD, designer and adjunct professor at Heidelberg University and is the former costume/set designer for Heidelberg's Community Music School. Ms. Cook currently works with several Cleveland-based theatre companies, most recently Spark Theatre 4 Youth, Near West, Dobama, Cleveland Opera Theatre, and Hathaway Brown Theatre Institute. She assists with local and regional HS productions teaching the next generation about technical theatre. Ms. Cook is the co-founder of the Norwalk Arts Center (NAC) and serves on the board of directors as Secretary as well as NAC's prop/set and costume mistress. BA: Baldwin Wallace Conservatory. MA: Regent University.



Mitchell's<sup>™</sup>  
FINE CHOCOLATES  
since 1939

Friends and Neighbors of Dobama Theatre for Over Sixty Years  
Supporters & Patrons of Fine Arts, Purveyors of Fine European Chocolates

2285 Lee Road Cleveland Heights 216-932-3200 [www.mitchellschocolates.com](http://www.mitchellschocolates.com)



## YOUNG ACTOR COORDINATOR

### LORNA PATTERSON

is an actor and teaching artist originally from Delaware, Ohio. She graduated from BGSU with a BA in Musical Theatre in 2020. Some of her favorite roles have been James Hook in *Hook and Smee* for Talespinner Children's Theatre and touring the American Southwest with *Jurassic Jungle Live*. This is Lorna's first time working with Dobama, and she is thrilled to be a part of this production of *Make Believe!*

## TECHNICAL DIRECTOR

### CONNOR STOUT

received his Master's in Opera Performance from the University of Illinois in 2021 under the tutelage of Dawn Harris and Nathan Gunn. He has been seen recently in Dobama's *The Land of Oz*, Cain Park's *Fun Home* and *Sondheim on Sondheim*, and Lakeland's *Assassins*. Enjoy the show!

## STAGE MANAGER

### JOEL RATHBONE\*

has been a freelance Stage Manager for over twenty years in Cleveland. He has managed productions for Playhouse Square, Dobama Theatre, Cleveland Public Theatre, Ensemble Theatre, Cleveland Shakespeare Company, and Lakeland College. He was grateful for the opportunity to manage Dobama's *The Other Place*, *Hand to God*, *The Nether*, *Marie Antoinette*, *Ella Enchanted*, *Grounded*, *Sunset Baby*, *Skeleton Crew*, *Wakey Wakey*, *The Night Alive*, *The Realistic Joneses*, *The Call*, *The Norwegians*, *Superior Donuts*, and *Cock*. His other favorite productions around town have been *Next to Normal* for Lakeland College and Ensemble's production of *The Normal Heart*. As always, he couldn't do it without the support of his friends and family, especially his wife Hester and his sons, Joel Wade and Felix.

## ASSISTANT DIRECTOR

### ERIN E. DOLAN

(see Dobama Staff)

## ASSISTANT STAGE MANAGER

### KENEDY BROOKS

is a Stage Manager who graduated from Kent State University in the summer of 2023. Some of their previous work as a stage manager includes *Zoom Play Without a Title*, *Home of the Brave*,

*KSU Opera Scenes 2022*, *Urinetown*, and *KSU Opera Scenes 2023*; she also worked on *Freaky Friday* and *Much Ado About Nothing* in the scenic department. Outside of college work Kenedy also worked as an assistant stage manager at on *A Funny Thing Happened on the Way to the Forum*, *The Marvelous Wonderettes*, and *The Prom* at Playhouse Theatre in 2023.

## ASSISTANT STAGE MANAGER

### KELSEY MALONE

is a senior Stage Management major at Baldwin Wallace University and has been involved in theatre and the arts her whole life. Her most recent projects were Dobama's 2023 DEAP Production (PSM) and *The Burial at Thebes* (PSM) at BWU, and some of her favorite stage management credits include *The Crucible* (ASM), *Men on Boats* (ASM), and *Heathers: The Musical* (SM). In her free time, she enjoys listening to music, watching movies with friends, and crocheting.



## PLANTSCAPING BLOOMS

Special Event Décor  
Florals For All Occasions

1865 E. 40th St. | Cleveland | 44103  
216.367.1200  
Plantscaping.com

"Making the extraordinary since 1979"

## ASSISTANT SOUND DESIGNER

E.J. BUCKNER

is an emerging self-taught sound designer based in Cleveland, Ohio. Eric's passion for sound design has developed through experiencing the Broadway atmosphere, which inspired him to become more involved with sound in a theatrical setting. Eric's aim is to bring about a dynamic blend of his personal experiences with the material world of sound and his world within. He is currently a student at John Carroll University in University Heights, Ohio, where he plans on obtaining a bachelor's degree.

## SCENIC PAINTER

JUSTINE SCHNEIDER

(she/they) is an artist from the Cleveland area. She has been Dobama's Resident Scenic Artist since 2016, painting almost all of their shows from then to now! You've likely also seen her work at venues such as Cain Park, Karamu House, Great Lakes Theater, and Chagrin Falls Academy. Being a member of IATSE Local 209, Justine also puts her scenic skills to use as a set painter for film.

## DOBAMA STAFF

**NATHAN MOTTA**

ARTISTIC DIRECTOR

(see About the Director)

**COLIN ANDERSON**

DIRECTOR OF PRODUCTION

has spent his life in Cleveland, which he now calls his artistic home as a director, producer and intimacy choreographer. He is proud to be openly gay and a fierce advocate for LGBTQ+ equity and access in the theatre industry and beyond. Directing credits include *Significant Other* (upcoming), *The Thin Place*, *The Soliloquy Project*, *She Washed His Hands*, *DEAP - Spring Awakening: A Children's Tragedy*, and multiple productions for the Marilyn Bianchi Kids' Playwriting Festival (Dobama); *The Prom* (Near West, upcoming); *Goodnight Tyler* (reading), *I'm Alive You Bastards* and *I Always Will Be* (Nightbloom Theatre Co); *The Inside Story* (Playwrights Local); *Beyond Therapy* (Access

When Justine isn't painting sets, she sells pet portrait commissions, stickers, coloring pages, and other fun things on her site, [ko-fi.com/artistjustineschneider!](http://ko-fi.com/artistjustineschneider)

## WARDROBE

LAINEY BODENBURG

is a 2022 graduate of Kent State University's Fashion Design program. Originally from Cincinnati, Ohio, her dream to become a Costume Designer has been realized through her numerous creative roles in the theatre and film world. Previous theatrical roles include Costume Designer (Dobama's 2023 DEAP Production and Weathervane Playhouse's *Nice & Kind*), Assistant Costume Designer (Porthouse Theatre's *West Side Story*), Stitcher (Cleveland Playhouse's *Moriarty* and Porthouse Theatre's *Little Shop of Horrors*, *Godspell*), and Wardrobe Supervisor (Weathervane Playhouse's *Kinky Boots*, *Joseph and the Amazing Technicolor Dreamcoat*). Laine is thrilled to have interned this past summer at Dobama Theatre as she makes Cleveland her new home!



**Come relax & enjoy a  
drink before the show.  
Enjoy a glass or a pint  
with a charcuterie board.**

[thewinespotonline.com](http://thewinespotonline.com)  
2271 Lee Road, Cleveland Heights



Theatre Project); *The Baltimore Waltz*, *Ordinary Days*, *For Whom the Southern Belle Tolls*, and *Next to Normal* (Oberlin College). Colin has also worked with Maelstrom Collaborative Arts, Cleveland Public Theatre, Harlequins Theatre, Olde Town Hall Theatre, Elyria Catholic High School, and BorderLight International Theatre + Fringe Festival, where he acted as Assistant Producer during its founding. BA: Oberlin College. [colintyleranderson.com](http://colintyleranderson.com)

## MARIAH BURKS

### DIRECTOR OF ENGAGEMENT

(she/her) is a Cleveland, OH native. For the past 22 years she has collaborated with many theaters across greater Cleveland and more. As an actress, singer, director, and educator she thrives to gain even more versatility. Her work has mainly been seen at Cleveland Play House, where she performed *Clue: A New Comedy* (The Cook); *The 25th Annual Putnam County Spelling Bee* (Logainne) and more. An alumni of the CWRU/CPH MFA Acting Program and a graduate of Bowling Green State University's Musical Theatre Program. Mariah was the recipient of the National Irene Ryan Acting Award at the Kennedy Center (ACTF) in Washington, DC. Other regional and local theatre work includes: AIRNESS (Dobama Theatre), *Caroline, or Change* (Tantrum Theatre) and *ANTIGONE* (Cleveland Play House). Instagram: @magical\_mariahb  
Email: [mariahb@dobama.org](mailto:mariahb@dobama.org)

## ERIN DOLAN

### DIRECTOR OF PROGRAMS

(she/her) is an Actor, Director, Educator, Playwright, and Poet based in Northeast Ohio. Originally from western Massachusetts, Erin spent her later childhood in Lorain County.

She studied theatre at Kent State University and Lorain County Community College, where she first discovered her great love of including children in the creative process. Her path led her to Houston, Texas, and later to Columbus and Akron, Ohio, where she focused solely on her work in Early Childhood Education for several years. In 2017, Erin returned to Cleveland to rejoin the exciting and dynamic arts community here. Erin has over twenty years of experience as a classroom educator, the last eight of which included administration. She is the co-founder of Awesome Possum Theatre Company as well as Stratosphere, a performing arts collective. Erin was most recently heard onstage as the voice of Val Fuego in *Web of Deceit* (Stratosphere/BorderLight Festival), an illustrated radio play. Recent directing credits include *James and the Giant Peach* (LCCC/Spark Theatre 4 Youth collaboration), *Cupid & Psyche* (Stratosphere), *Burst of Thought* (Cleveland Public Theatre's Pandemonium). Also a playwright, Erin has been commissioned to adapt children's classics for The Illusion Factory in Akron, Talespinners Children's Theatre in Cleveland, and most recently Spark Theatre 4 Youth in Elyria, Ohio. Erin is a proud and vocal advocate for artists and educators. She strives to nurture in all children, artists, and audiences an enthusiasm for learning and an appreciation for their own imagination. Email: [edolan@dobama.org](mailto:edolan@dobama.org)

## ELISE KUKLINKA

### CONNECTIVITY DIRECTOR

(she/they) began working at Dobama in 2015 in the box office before transitioning to the Patron Services Manager in 2018. In 2021, Elise became Connectivity Director, a role that encompasses fostering internal communication,



**MAC'S BACKS**

**Thank You for Supporting the Arts!**

1820 Coventry Rd., Cleveland Heights, Ohio 44118 • 216.321.2665 • [www.macsbaks.com](http://www.macsbaks.com)

connecting with artists, working with volunteers, and building deeper relationships with the greater community. Previously, Elise could be found in myriad places including La Jolla Playhouse, Ensemble Theatre Cincinnati, The Carnegie and Children's Theatre Company in Minneapolis. Email: [elisek@dobama.org](mailto:elisek@dobama.org)

## AMY LIN WEAVER

### DIRECTOR OF BUSINESS

(she/her) joined the Dobama team in September and works on a wide range of operational, financial, and development activities at the theatre. She is also a sound designer and stage manager, with selected credits including Panther Women: An Army for the Liberation (Cleveland Public Theatre), Constellations (Players' Theatre Group), and The 39 Steps (Players' Theatre Group). Amy began her professional career as the inaugural House Stage Manager at the Maltz Performing Arts Center at Case Western Reserve University before spending several years with progressive responsibilities as Cleveland Public Theatre's Finance Manager. Amy studied

computer science and comes to Cleveland from the Washington, D.C. area.

## CARRIE WILLIAMS

### EDUCATION DIRECTOR

(she/they) is a performer, director, scenic artist, and a fierce arts education advocate. After earning a Bachelor of Arts in Theatre from Bowling Green State University, she moved to Cleveland to join Great Lakes Theatre's acclaimed School Residency Program as an Actor-Teacher. She has taught and created programming for a multitude of organizations, including Playhouse Square, Ensemble Theatre, French Creek Theatre, Brecksville Theatre on the Square, Fairmount Center for the Arts, Hawken School, and Talespinner Children's Theatre. Her artistic pedagogy focuses on exploring collaborative processes, fostering creativity, and empowering youth to step outside their comfort zone. Here she coordinates the Marilyn Bianchi Kids' Playwriting Festival, the longest-running celebration of young playwrights in the United States. Email: [carrie@dobama.org](mailto:carrie@dobama.org)

*Happy endings  
begin with . . .*

# TASTE

A place for food, wine, fun

2317 Lee Road

*(Located one block north of Dobama next to the Atma Center)*

**Cleveland Heights**

**216-932-9100**

[www.tasteofwine.com](http://www.tasteofwine.com)

Kitchen open 5 - 10 pm. Bar open late.

Receive a 10% Discount  
before or after show with same day tickets or stubs

*. . . experience  
contemporary  
cuisine created  
by chef Jesus Orozco*

**CLE**

urban  
winery™



*The Official  
Winery  
of Dobama  
Theatre*



**Live Music**  
Fridays and  
Saturdays  
7-10pm

**Good  
Wine  
Made  
Fun!**

(216) 417-8313

2180B Lee Rd.  
Cleveland, OH 44118

[www.CLEurbanwinery.com](http://www.CLEurbanwinery.com)

**GREAT LAKES<sup>®</sup>**  
B R E W I N G C O



**SO DELICIOUS, YOU'LL  
DEMAND AN ENCORE.**

[GREATLAKESBREWING.COM](http://GREATLAKESBREWING.COM)

**ADVERTISE  
IN DOBAMA'S  
2023/24 SEASON.**

Contact us at  
216.932.6838

## The 46th Annual Marilyn Bianchi Kids' Playwriting Festival June 2024

Dedicated to the memory of Marilyn Bianchi (actress, director, and a founding member of Dobama) and the first playwriting festival of its kind in the United States, this Dobama tradition continues its long history with the 46th Festival in June 2024!

We receive hundreds of plays written by Northeast Ohio students grades 1 – 12 throughout the year. Select winning entries are performed as part of a FREE Kids' Fest weekend.

Email [youngplaywrights@dobama.org](mailto:youngplaywrights@dobama.org) for more information on how to participate.



## DOBAMA EMERGING ACTORS PROGRAM (DEAP)

### JULY 2024



For more information, visit [dobama.org](http://dobama.org).

Now in its 14<sup>th</sup> season, DEAP is the only summer intensive program in the region that is focused on technique-based training for a small ensemble of high school and college students. Serious young actors receive training in Meisner, Laban, Michael Chekhov, and Alexander Technique. Emerging professionals receive mentorship in the areas of design, stage management, and directing. The program culminates with a blackbox production of a heightened text play.

## THE PREMIERE CLUB

### Dobama's Individual Donor Program

Dobama Theatre recognizes the generosity of the many sponsors, foundations, and individuals who sustain us with contributions throughout the year. Each gift is significant regardless of size, both to us as an organization and to the donor. We have combined the following names to acknowledge the significance of those gifts, large and small. Thank you; we would not be here without you.

Please consider becoming a member of **The Premiere Club** today. *Benefits begin at the \$150 level. For more information on The Premiere Club and its great benefits, please pick up a brochure at the theatre or call us at 216.932.6838.*

*This listing includes donors from July 1, 2022 – September 15, 2023 Every effort has been made to ensure accuracy. Please call 216.932.6838 with corrections.*

*\*denotes Dobama board members*

### ANNUAL FUND DONORS

Anonymous  
 Catherine Albers  
 Susan Alcorn  
 Colin Anderson  
     In memory of Mary Ann Sword  
 Erika Anderson  
 James Anderson and David Wittkowsky  
 Susan Antonelli  
 Charlie Apy  
 Denise Atwood  
 Anthony and Cheryl Barabani  
 Hallie Baron  
 Roldo Bartimole  
 Randy Becker  
 Robert and Linda Bednar  
 Lynda Bender  
 Laurie Berrie  
 Dennis Bianchi  
     In memory of Don and Marilyn Bianchi  
 Teddi Bianchi  
     In memory of Don Bianchi  
 Tom & Dorothy Bier  
 Anne and Glenn Billington  
 Laura Binstock  
 Amy Bistok  
 Geoff and Julie Bonebrake  
 Daniel and Shelley Boyle  
 Tameka Bradley\*  
 Barbara and Martha Brennan  
 The Bricker Family  
 Vincent Briley  
 Terria Brooks  
 Claire Broome  
 Ellen Brown  
 James F. Brown and Jean T. Stevenson  
 Richard Fredrick Brown  
 John & Ellie Brucken  
 Daniel Brustein and Joan Trey  
 Jane and Eric Buder Shapiro  
 Glorietta Burks  
 Anne Burr  
 Brandt Butze  
 Katie and Dennis Cahn  
 Cynthia Calhoun  
 Jack and Janice Campbell  
 Christina Caputo  
 Joan Carney

Cindy and Tim Carr  
 Jason Chance  
 Laurence and Susan Channing  
 Lena Chapin  
 David and Sandra Cobb  
 Barbara Colombi  
 Christal Contini\*  
 Tom and Anita Cook  
 JL Cordaro Household  
 Jutta Corrigan  
 Ensign and Lana Cowell  
 Ronda Curtis  
 Jacqueline Debose  
 Daniel and Laura Roberts Dempsey  
 Anne DesRosiers and Steve L. Kadish  
 Kristen Dodd  
 Karin Dodge  
 Janet Dodrill  
 Joyce Dodrill Krieger and Mark Krieger  
 Joseph and Kathleen Dolan  
 Carol Dolan  
 Amy Dolzine  
 Cheryl and Rick Drake  
 Jeffrey R. Dross and Michele J. Ladoucer  
 Matt\* and Tammy Eiben  
 Deena and Dick Epstein  
 Natalie and Morton Epstein  
 Judy and Joe Erlichman  
 Marian Fairman\*  
 Jon and Mary Fancher  
 Lindsey Felice  
 William Finn and Rachel Martinez-Finn  
 Diane Fitzpatrick  
 Darlene Floden and Brian King  
 Susan Ford  
 Char and Chuck Fowler  
 Bruce Frankford  
 Jonathan Freeman  
 Jana Friess  
 Judith Ryder Frumker  
 William Fulton  
 Rosemary Gallagher  
 Andrew Gallo  
 Vikas Gampa  
 Mr. and Mrs. Scott D. Garson  
 Eva Gil  
 Sheldon and Nan Gisser  
 Deborah Glosserman  
 Blanca Gonzalez

Richard Goodban  
 Robert Graf  
 Joan Graham  
 Marina Grant  
 Anna Greenfield  
 Benjamin Gregg  
 Victor Groza  
 Thomas and Cynthia Gustafarro  
 Lee and Peter Haas  
 Bunny Hafke  
 Tom and Kirsten Hagesfeld  
 Patricia and Bill Hanavan  
 Roberta Hardacre  
 Linda, Larry, Caroline, and Gus Hatch  
 Sadie Hatcher  
 Barbara Hawley and David Goodman  
 Timothy Hayes  
 David Heller  
 Fran Heller  
 Jean Helminger  
 Curt and Karen Henkle  
 Bill and Barbara Hill-Newby  
 Michelle Hillstrom  
 Melissa Hintz  
 Craig and Janet Hoffman  
 Mike and Dori Hollis  
 Don Horn  
 Martha A. Hostetter  
 Maxine W. Houck  
 Caroline Jackson-Smith\*  
 William Johnson  
 Ruth Kabat  
 Karen and Larry Katz  
 Steven Kelemen  
 Hannah and Jeff Kish  
 Marie Kittredge  
 Robert and Nancy Klein  
 Eric and Marian Klieber  
 Donna Korn\*  
 Ursula Korneitchouk  
 Isay Krainsky  
 Howard and Sally Kramer  
 Jacob Kronenberg  
 Elise Kuklinca and Aaron Petersal  
 Christine Lakus  
 Albert Leonetti and Ruth Anna Carlson  
 Cindy Letzt  
 Nancy Levy  
 Eric and Amy Lewanda

# DOBAMA THEATRE

Sophie Madorsky  
Daniel Maltz  
Joan Mawby  
Eileen McCaffrey  
Sandra McClellenn  
Anne J. McEvoy  
Sharon McIntyre  
Amy McKenney  
Megan and Michael McNamara  
Daniel and Diana Medalie  
Barbara C. Megery  
Pamela and Jim Meltzer  
Kayla Merritt  
Claudia Metz and Tom Woodworth  
Hedy\* and Michael Milgrom  
Marissa Glynias\* and Dan Moore  
Jeremy Mosier  
Anna Maria Motta  
Brad Motta and John O'Grady  
Susan Murray and Don Harvey  
Debbie Neale  
Alexis Norris  
Mary Jane Nottage  
Laurance and Donna Nowak  
Mary Ober  
Daisha Olmeda\*  
Seth Orbach & Ann V. Klotz  
Jamie and Lori Owen  
John and Mary Jude Pakiela  
Lou Papes  
Maryjean Pawlowski  
Marcj and Jeff Pearl  
David and Judie Perelman  
Bill Peterson  
Elizabeth Petiprin  
Judge and Mrs. Dan A. Polster  
Mr. David Porter and Margaret Poutasse  
John and Norine Prim  
Phillip Pritchett

Joanne and Richard Prober  
Quentin and Gay Quereau  
Susan and Larry Rakow  
Edwina Ramos  
Marylyn and Bruce Ranta  
Gloria K. Ritter  
Barbara S. Robinson  
Margaret Robinson  
Barbara Rodriguez  
Bruce and Christine Rogen  
Evangelia Romoudi  
Debra Rosenthal\*  
Brandon Ruud  
Ronald R. Rydarowicz  
Ratna Sahay  
Margaret Salas  
Bradley Sales  
Allen Salzberg  
Larry Sanborn  
Esther Schechter  
Toni and Donald Scherzer  
Sharon Schnall and R. Drew Sellers  
Diane and Jared Schnall  
Barbara and John Schubert  
Martha and David Schubert  
Michael Schwartz  
Theresa Schwarz and Peter Bohan  
Gunter Schwegler  
David Sedwick and Martina Veigl  
David Shifrin  
Larry and Aya Shlachter  
Faye and David Sholiton  
Amy Shore with Robin, Melanie, Gina, Patty,  
Audrey, and Karen  
Dean and Judith Sieck  
Lucy Simm  
Jean Simmons  
Norman and Patricia Singer  
Geraldine Sliva

Jane and Gary Small  
Michelle Smith  
Trinidad Snider\*  
Robert Snyder and Cathy Caveney  
John Sobonya  
Judith Sockman  
Alexander Spenik  
in memory of Mr. Stephen Sondheim  
Margaret Stager  
Jennifer Stapleton  
Laura and Darrell Starnik  
Darwin Steele  
Nancy Stemmer  
Myron Bud Stern  
Anita Stoll and Pete Clapham  
Kelly Strand  
Elizabeth Stueber  
Jeffrey Sunshine  
Laura Sweeney  
Frank & Victoria Titas  
Leonard & Kerstin Trawick  
James and Debra Vail  
M Valentin  
Monica Van Niel  
Kate Vlasek\*  
Killeen Vogel\*  
Greg Vovos\*  
David Waltermire  
Mary Weems  
Mary Wehrle  
Rona Weiss  
Margaret Weitzel  
James and Eileen Wilkoff  
Reginald Williams  
Leah A. Wolfe  
Ellen Worthington  
Rachel Zake Ozan\*  
Peter Zicari  
Thomas Zipp\*

## DOBAMA THEATRE CORPORATE DONORS, FOUNDATIONS AND GOVERNMENT DONORS

### \$50,000 +

---

The Cleveland Foundation  
Cuyahoga Arts & Culture  
Ohio Department of Development

### \$25,000 - \$49,999

---

The George Gund Foundation  
The Ohio Arts Council  
The Paul M. Angell Family Foundation  
The Shubert Foundation

### \$10,000 - \$24,999

---

The David and Inez Myers Foundation  
The Louise H. and David S. Ingalls  
Foundation  
The Martha Holden Jennings Foundation  
The National Endowment for the Arts

### \$5,000 - \$9,999

---

Benesch, Friedlander, Coplan & Aronoff  
MAI Capital Management

### \$2,500 - \$4,999

---

The Dominion Energy Charitable  
Foundation  
The Char and Chuck Fowler Family  
Foundation  
The Jewish Federation of Cleveland

### \$1,000 - \$2,499

---

Cedar-Lee SID  
The Geoffrey Michael Heller Memorial Fund  
Impact Assets  
The KeyBank Foundation  
The Music and Drama Club  
The Progressive Insurance Foundation

### \$500 - \$999

---

KeyBank  
The Barbara T. Miller Fund for Good  
The Neale Foundation  
Ruffing Montessori School  
Sherwin Williams

### Season Media Sponsor

---

89.7 WKSU ideastream

### Thank you to the following people and businesses for their generous in-kind support

---

Agnes Studio  
Anne Pillot Creative  
CLE Urban Winery



BECK CENTER FOR THE ARTS  
2023-2024  
PROFESSIONAL THEATER SEASON



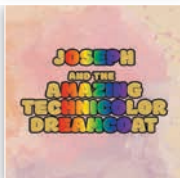
*Creating Arts Experiences*



### CAT'S-PAW

SEPTEMBER 22 – OCTOBER 22

In this tight drama, a cat-and-mouse-game between the young reporter and the terrorist leads to a shocking conclusion!  
Recommended for ages 16+



### JOSEPH & THE AMAZING TECHNICOLOR DREAMCOAT

DECEMBER 1 – 30

Family-friendly musical about family! This production features different styles of music and the most colorful costume piece! Perfect for all ages, this show is sure to be a hit with you and yours.



### RIDE THE CYCLONE

FEBRUARY 9 – FEBRUARY 25

Collaboration with Baldwin Wallace University Music Theatre Program. A spooky and hilariously story about the lives of six teenagers cut short in a freak accident aboard a roller coaster.



### JITNEY

APRIL 5 – MAY 5

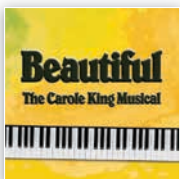
Written in 1979, first produced in 1982, reveals the story of generations of jitney drivers and how they impacted their communities.



### A DOLL'S HOUSE, PART 2

MAY 31 - JUNE 30

This Tony Award-winner picks up fifteen years after Nora Helmer slammed the door on her stifling domestic life, but now a knock comes at that same door. Funny, probing, and a sharp contemporary.



### BEAUTIFUL, THE CAROLE KING MUSICAL

JULY 12 - AUGUST 11

A Tony and Grammy Award-winner, this nostalgic yet fresh musical tells the story of the early life and career of Carole King, using songs that she wrote including such timeless hits as "You've Got a Friend."

TICKETS ON SALE NOW!

TICKETS: [BECKCENTER.ORG](https://beckcenter.org) | 216.521.2540

STUDENT TICKETS: \$17 (with valid I.D.) • GROUP RATES (4+) • \$10 SMART SEATS®

17801 Detroit Avenue, Lakewood OH 44107 | Minutes from downtown CLE. FREE parking!

# PLAN YOUR VISIT TO JOHN CARROLL UNIVERSITY



 **John Carroll**  
UNIVERSITY



VISIT PAGE  
[VISIT.JCU.EDU](https://www.visit.jcu.edu)

**NEXT ON THE DOBAMA STAGE**

**DOBAMA  
THEATRE**



# LITTLE WOMEN

**DECEMBER 1–31, 2023**

**WRITTEN BY:**  
Heather Chrisler

**DIRECTED BY:**  
Melissa Crum

WITH GENEROUS SUPPORT FROM

THE GEORGE GUND  
FOUNDATION

DAVID MALZ

PAUL M. ANCELL  
FAMILY FOUNDATION

AHEED  
STUDIO

Clayton  
Foundation

Ontario Arts  
Council

Ontario Arts  
Council

HUBBARD  
THEATRE



cuyahoga  
arts & culture  
strengthening community

IF YOU'RE LOOKING TO

expand  
your palette.

Downtown Cleveland Alliance SPARX! CITY HOP  
CODY YORK

**ClevelandArtsEvents.com**

connects you to the region's vibrant arts and culture scene.

With just a few clicks, discover hundreds of events made possible  
in part with public funding from Cuyahoga Arts & Culture.

